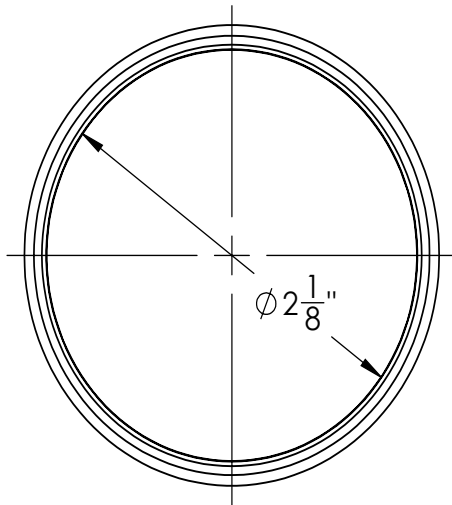


# TNAS Specifications



## TNAS: 1 1/2" L x 2" Diameter

Stainless Steel Threaded Outlet

- NPS straight thread
- For stainless steel channels requiring a threaded outlet connection

## Compatible with the following models:

### Site Sizable Series

- S-AS 65
- S-TIFAS 65 / S-LTIFAS 65

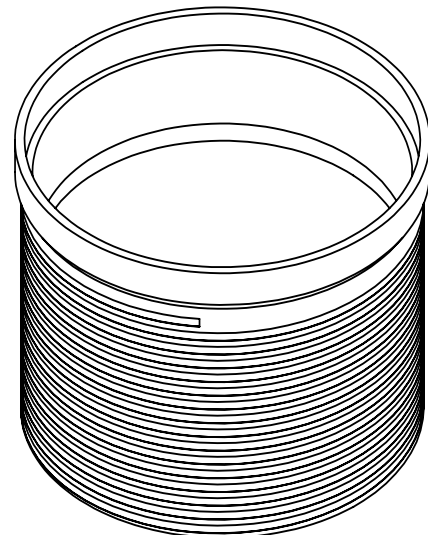
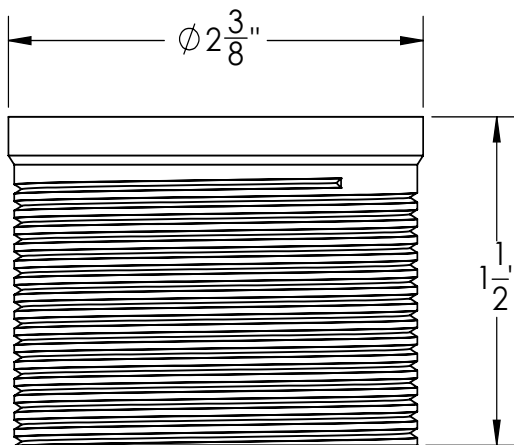
### Fixed Length Series

- FXAS 65
- FXTIF 65/FXLTIF
- FXIG 65
- FXSG 65

### FCB Double Waterproofing Models

- FCBAS 25
- FCBAS 65
- FCBTIF 65
- FCBIG 65
- FCBSG 65
- FCBST

TNAS Threaded Outlet to be Bonded to Stainless Steel Channel using M1 ZSIKA Sealant



**Infinity Drain**  
145 Dixon Avenue  
Amityville, NY 11701  
Phone: 516.767.6786  
Fax: 516.740.3066  
www.infinitydrain.com



NOTE: Installer must verify all rough-in dimensions prior to installation and consult local and national codes. Conformity and compliance to local and national codes are the responsibility of the installer.