



# LYNDON<sup>®</sup>

## 47" TROUGH

### WALL-MOUNT LAVATORY



**D20177001.415** - SINGLE-HOLE

**D20177002.415** - TWO SINGLE-HOLES

#### FEATURES

---

- Fine fire clay construction
- With overflow
- Works with any standard drain (drain not included)
- Includes mounting kit

#### DIMENSIONS

---

##### NOMINAL DIMENSIONS

46-3/4" x 17-7/16" x 8-9/16" (1187 x 443 x 217 mm)

##### BOWL INSIDE DIMENSIONS

44-1/2" (1130 mm) wide

11-13/16" (300 mm) front to back

5-1/2" (140 mm) depth

#### COLORS/FINISHES

---

Canvas White (415),

Polished Chrome (100), Brushed Nickel (144)

#### COMPONENTS

---

**D35155040.XXX** Decorative Grid Assembly (recommended)

#### COMPLIANCE CERTIFICATIONS

Meets or Exceeds ASME A112.19.2/CSA B45.1



Meets the Americans with Disabilities Act Guidelines and ANSI A117.1 Requirements for Accessible and Usable Building Facilities-Check Local Codes.

ROUGH IN DIAGRAM SHOWN  
ON NEXT PAGE

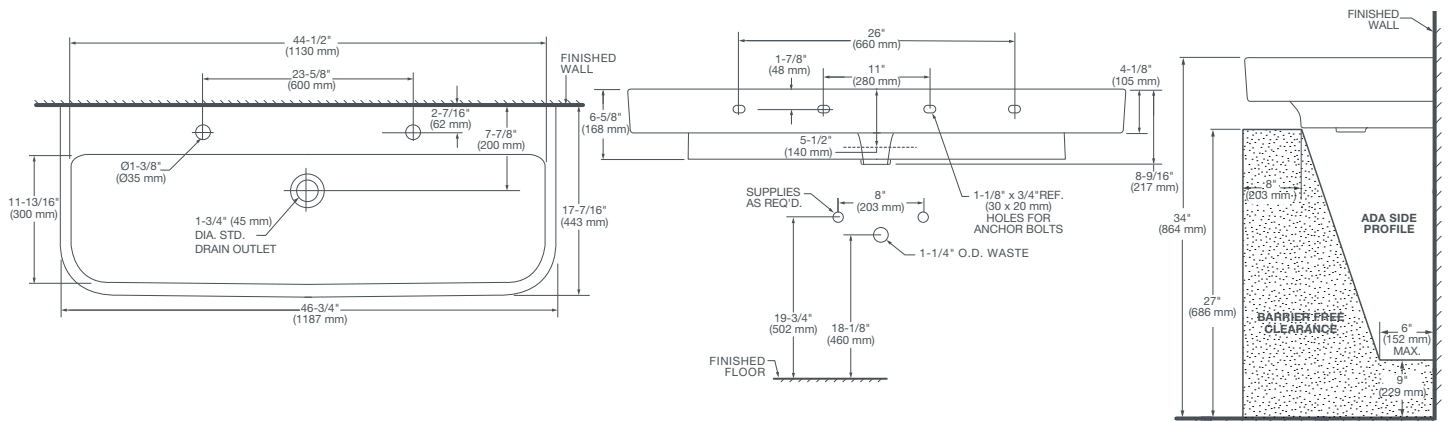
PART OF **LIXIL**



# LYNDON<sup>®</sup>

## 47" TROUGH

### WALL-MOUNT LAVATORY



#### NOTES:

Dimensions shown for location supplies and "P" trap are suggested. Provide suitable reinforcement for all wall supports. Slab/pedestal anchors and mounting features to be furnished by others. Fittings not included with fixture and must be ordered separately. Installation Instructions supplied with lavatory.

#### IMPORTANT:

Dimensions of fixtures are nominal and may vary within the range of tolerance established by ANSI standards. These measurements are subject to change or cancellation. No responsibility is assumed for use of superseded or voided pages.

PART OF LIXIL